

# VRM FLO-BOX



## General Instructions:

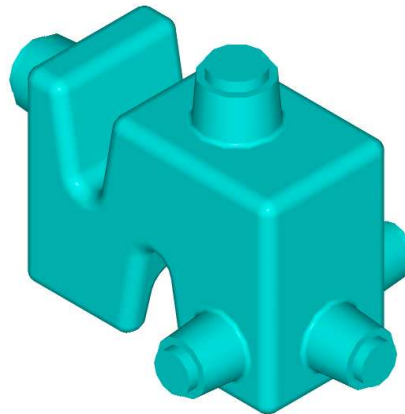
Install FLO-BOX to allow even distribution of water to up to three gravity discharge lines.

Standard discharge pipe junctions are provided to adapt to 90mm PVC. Where other pipe diameters are specified, you should use approved expansion or other couplings.

Install FLO-BOX level in both directions across the top of the box.

Use either 50mm BSPT threaded fitting or 100mm Standard Sewer Pipe to connect from VRM Sump Tank or gravity connection to FLO-BOX for distribution of collected effluent

FLO-BOX has a variety of uses. Most common is its application as the basis for even distribution of effluent to a final Discharge Area for effluent disposal.



Note: VRM Treatment Systems making use of FLO-BOX specify sizing and construction as per AS 1547-2000. Please refer to Appendix 4 of AS1547-2000 for details of discharge area construction specifications.

Formulae for Sizing of Disposal areas is also available in AS1547-2000. For further assistance contact us at:

Website: [www.vrm.com.au](http://www.vrm.com.au)

Telephone: (07) 4774 6337.

*Please refer to the attached Scale Drawings for true dimensions and Engineering detail*



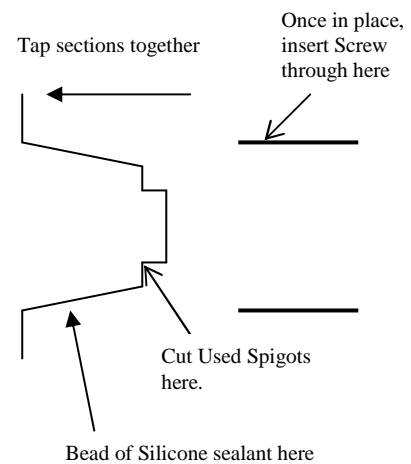
# VRM FLO-BOX



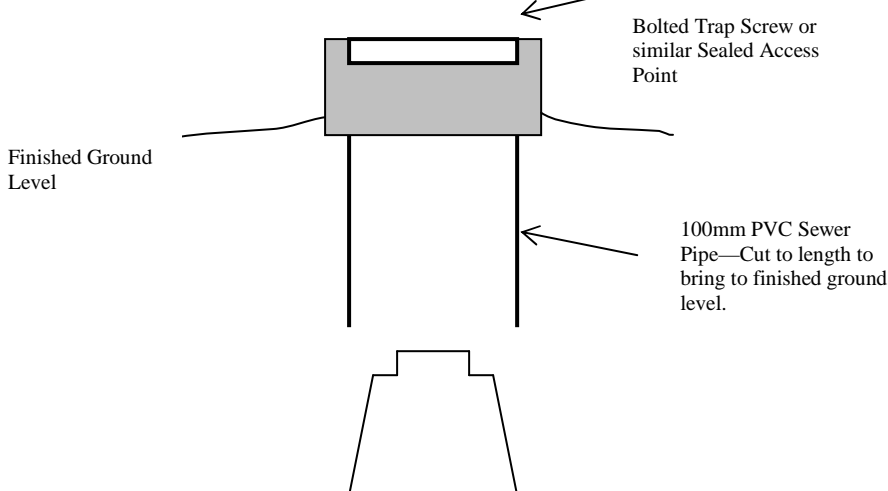
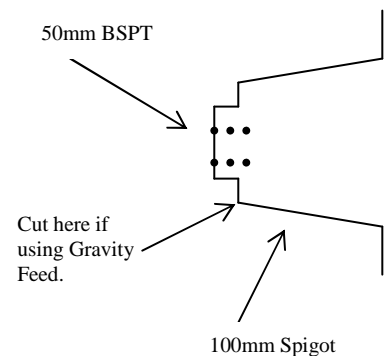
## Assembly Instructions

1. **Ground Preparation.**  
Soil should generally be excavated and a level bed of sand approximately 50mm thick used to bed FLO-BOX in.
2. **Connection of Discharge Pipes.**  
Choose which discharge spigot(s) are to be used and cut 15mm from the ends of these.  
Run a bead of silicon or similar sealant around the used spigot(s).  
Install Pipe over spigot and tap into place with a rubber mallet until Spigot is fully seated. Insert stainless fixing screws (not provided) through Pipe into overlapped Spigot(s).
3. **Connection of Feeder Pipe.**  
FI can be fed either by pumped line (Rising Main) or by Gravity.  
For pumped feed, 50mm BSP Female connection is provided.  
For Gravity Feeder a spigot is provided which accepts 100mm PVC Sewer pipe. If using Gravity Feed, cut the threaded adaptor from Feeder Spigot by cutting 15mm from the Feeder Spigot. Run a bead of silicon or similar sealant around the spigot. Install feeder pipe to the spigot and tap into place with a rubber mallet until Spigot is fully seated. Insert stainless fixing screws (not provided) through pipe into overlapped Spigot.
4. **Affixing Inspection Opening.**  
A 100mm Spigot is provided for affixing an inspection opening to the top of FLO-BOX. Use a bolted trap screw ("Plumber's Pal") or similar sealed and threaded cap (not provided) for this application.  
Choose length of pipe needed to bring Inspection Opening above finished ground level.  
Run a bead of silicon or similar sealant around the inspection spigot. Install pipe over spigot and tap into place with a rubber mallet until Spigot is fully seated.
5. **Sand In-Fill.**  
Back-fill around FLO-BOX with sand to 50mm above top of box.

### Discharge Spigots



### Feed Spigot



DO NOT SCALE

